

Bolts and Screws



Inch and Metric sizes available. Specialty platings available upon request.

Nuts



For enquiries, call +44(0) 1902 711 041 or email ukenquiry@earnestmachine.com

Washers



SAE FLAT WASHER
STANDARD



SAE FLAT WASHER
HARDENED



USS FLAT WASHER
STANDARD



USS FLAT WASHER
HARDENED



HELICAL SPRING
LOCK WASHER - HEAVY



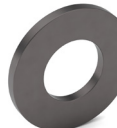
HELICAL SPRING
LOCK WASHER - REGULAR



HELICAL SPRING
LOCK WASHER - LIGHT



HI COLLAR SPRING
LOCK WASHER



F436 STRUCTURAL WASHER



FENDER WASHER



EXTERNAL TOOTH WASHER



INTERNAL TOOTH WASHER



PLOW WASHER
HARDENED

Clips & Clamps



HEAVY DUTY TUBE CLAMP
KMC CC



VINYL HEAVY DUTY TUBE
CLAMP - KMC CCV



DOUBLE TUBE CLAMP
KMC CD



DOUBLE TUBE CUSHION
CLAMP - KMC CDL



VINYL DOUBLE TUBE CLAMP
KMC CDV



FLARED EDGE CLAMP
KMC CF



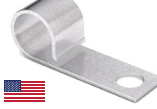
VINYL FLARED EDGE CLAMP
KMC CFV



HALF CLIP
KMC CH



VINYL HALF CLIP
KMC CHV



J-CLIP
KMC CJ



VINYL J-CLIP
KMC CJV



DOUBLE PIPE CLAMPS
KMC CM



VINYL DOUBLE PIPE CLAMPS
KMC CMV



WIRING AND TUBE CLAMP
KMC CO



WIRING AND TUBE CUSHION
CLAMP - KMC COL



VINYL WIRING AND TUBE
CLAMP - KMC COV



LIGHT DUTY WIRING AND
TUBE CLAMP - KMC CW



LIGHT DUTY VINYL WIRING
AND TUBE CLAMP -
KMC CWV



FLAT AND CONCAVE
EXPANSION PLUGS
KMC PF & PC



WORM CLAMP